



A TEREX BRAND

Parts Manual

Serial Number Range

Super Hoist

from 4193-93 to 4101-8906
from GH02-8907

Part No. 82298

Rev D4

January 2011

Technical Publications

Genie Industries has endeavored to deliver the highest degree of accuracy possible. However, continuous improvement of our products is a Genie policy. Therefore, product specifications are subject to change without notice.


Readers are encouraged to notify Genie of errors and send in suggestions for improvement. All communications will be carefully considered for future printings of this and all other manuals.

Contact Us:

<http://www.genieindustries.com>
e-mail: awp.techpub@terex.com

Copyright © 1993 by Genie Industries
82298 Rev D July 2009
Fourth Edition, Fourth Printing

"Genie" and "Super Hoist" are registered trademarks of Genie Industries in the USA and many other countries.

 Printed on recycled paper

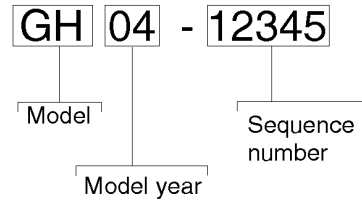
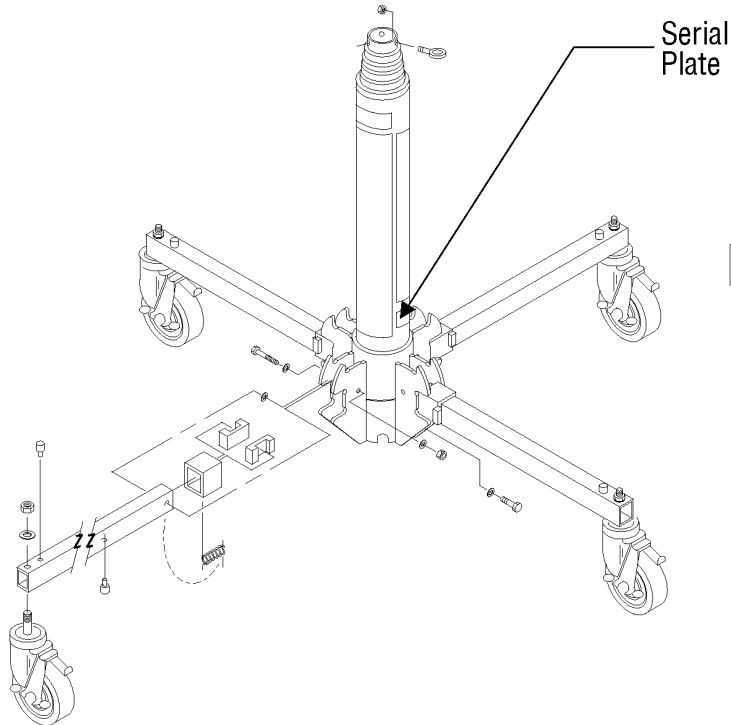
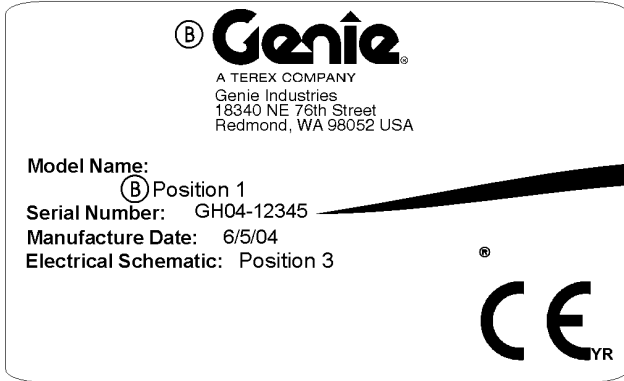


Table of Contents

This manual is updated frequently. If you have a printed manual, you can keep it up to date by downloading new figures from the Genie website at www.genieindustries.com. For the most up-to-date parts information, visit the Parts Lookup System on the Genie website at www.genieindustries.com.

How to Read Your Serial Number.....3
 Parts Stocking List.....7
 How to Order Parts.....8
 Service Parts Fax Order Form.....9

Electronic Version

Click on any page number to view the figure.

Base Component

101.1 Base Tube Assembly.....10
 102.1 Platform Assembly.....12
 103.1 Control Handle Assembly.....16

Indices

Part Number Index.....18
 Part Description Index.....19

Cross References

This Page Intentionally Left Blank

Recommended Parts

Description	Part No.
Genie Blue Paint, 1 Gallon	32150
Genie Blue Paint, 12 Ounce Aerosol.....	1484
Genie Gray Paint, 1 Gallon.....	32151
Genie Gray Paint, 12 Ounce Aerosol	1268

Manuals

Genie Industries offers the following support documents for these models:

Title	Part No.
Genie Super Hoist Operator's Manual, 3rd Edition (before serial number GH04-12073).....	32306
Genie Super Hoist Operator's Manual, 3rd Edition (after serial number GH04-12074).....	82297
EMI Safety Manual	27581
Manual of Responsibilities	
ANSI A92.5	31587

How To Order Parts

Please be prepared with the following information when ordering replacement parts for your Genie product:

- Machine model number
- Machine serial number
- Genie part number
- Part description and quantity
- Purchase order number
- "Ship to" address
- Desired method of shipment
- Name and telephone number of the authorized Genie Distributor in your area

Use the Service Parts Fax Order Form on the next page and fax your order to our Parts Department.

If you don't know the name of your authorized distributor, or if your area is not currently serviced by an authorized distributor, please call Genie Industries.

Machine Information

Model

Serial Number

Date of Purchase

Authorized Genie Distributor

Phone Number

Genie North America

Telephone (425) 556-6551

Toll Free (877) 367-5606 in U.S.A. and Canada

Fax (425) 556-8659

Genie UK

Parts Telephone (44) (0) 1476 584352

Parts Fax (44) (0) 1476 584340

Genie Australia

Parts Telephone (617) 03375 1660

Parts Fax (617) 03375 1002

Genie France

Parts Telephone (33) (0) 237 26 09 99

Parts Fax (33) (0) 237 31 50 10

Genie Germany

Parts Telephone (49) (0) 4202 885223

Parts Fax (49) (0) 4202 885225

Genie Scandinavia

Parts Telephone (46) (31) 3409612

Parts Fax (46) (31) 3409613

Genie Iberica

Parts Telephone (34) (93) 5795042

Genie Brazil

Parts Telephone (55) (114) 1665755

Parts Fax (55) (114) 1665754

Genie Japan

Parts Telephone (81) (33) 4536082

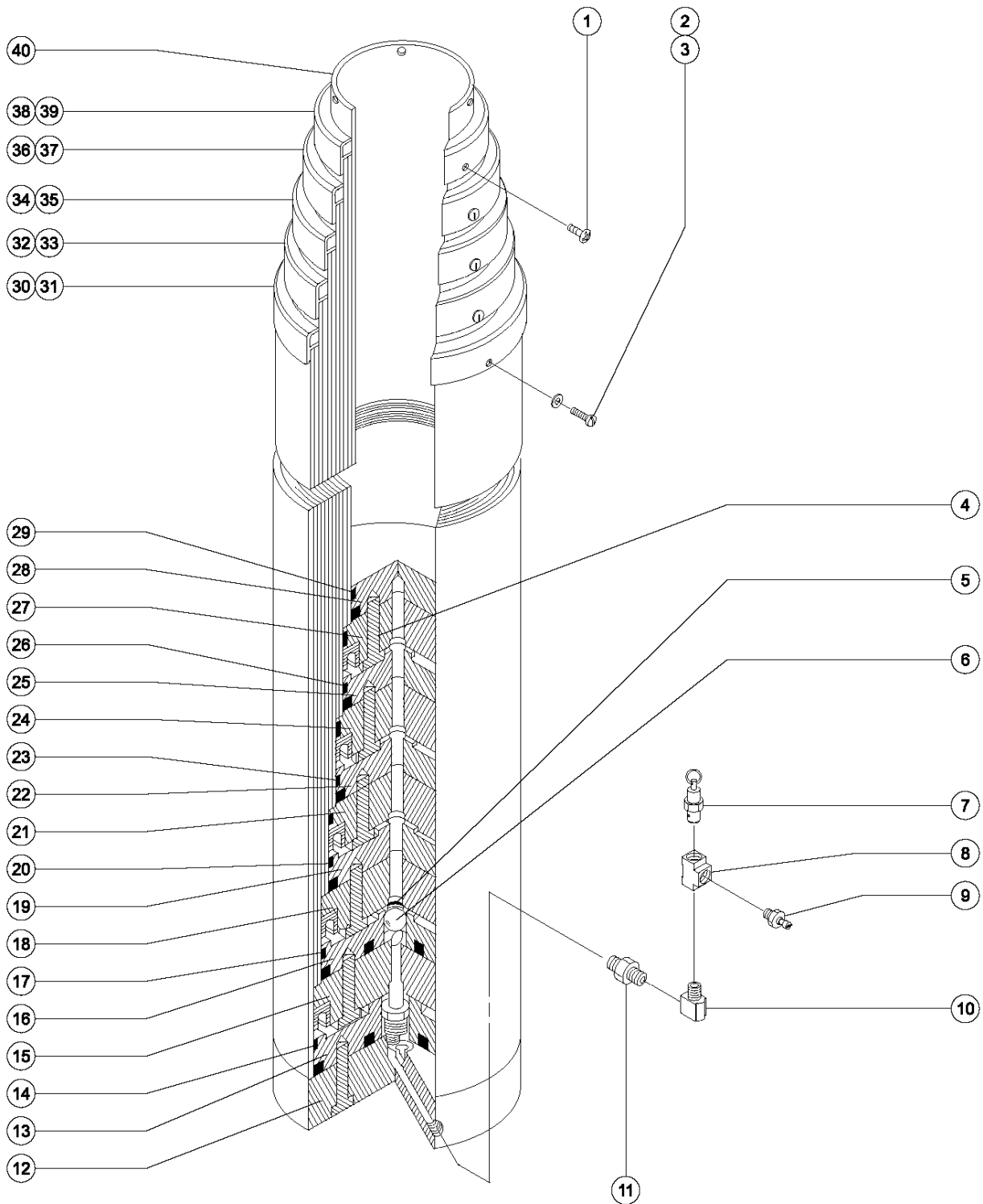
Parts Fax (81) (33) 4536083

Genie China

Parts Telephone (86) (215) 3852570

Parts Fax (86) (215) 3852569

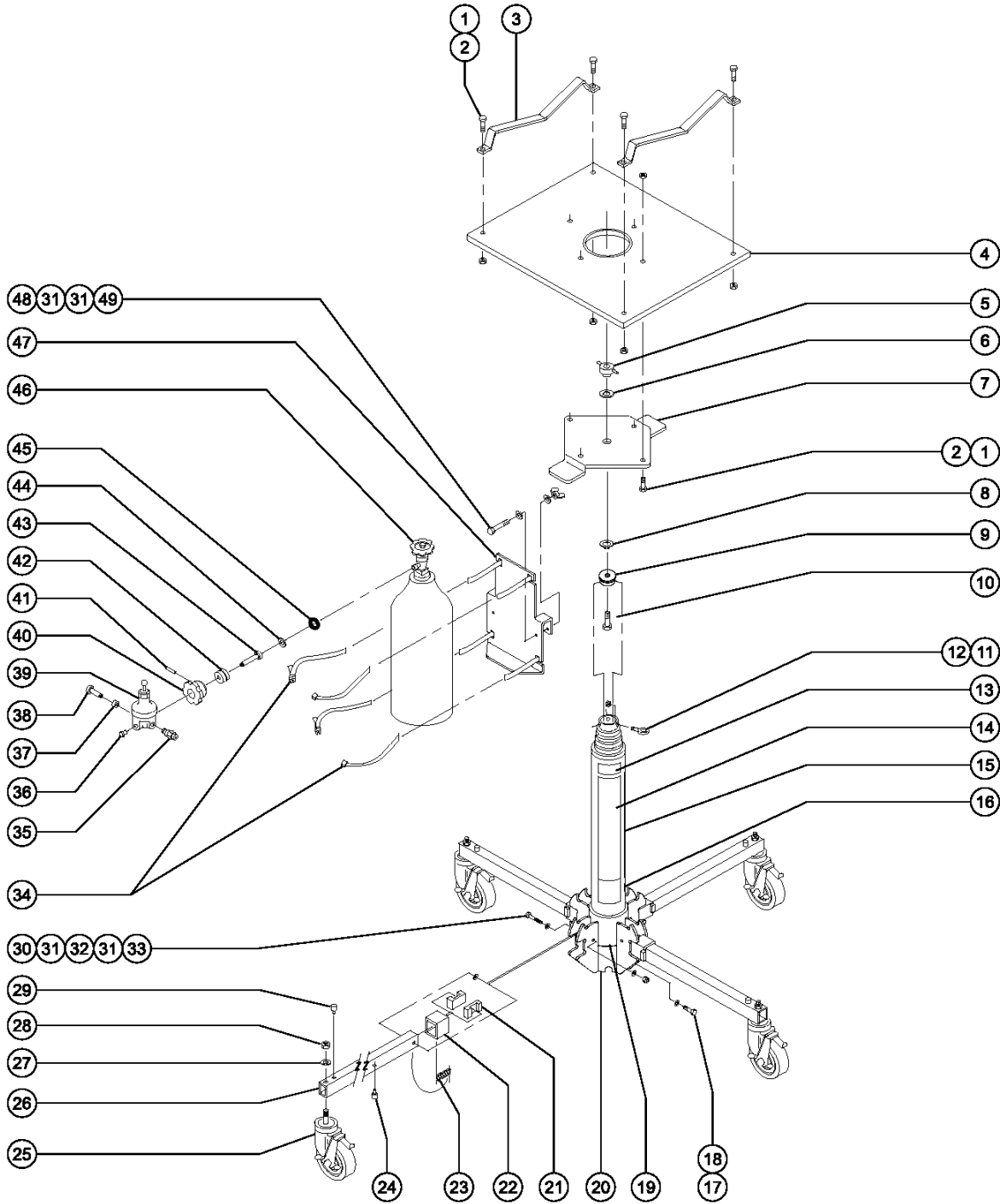
101.1 Base Tube Assembly



101.1 Base Tube Assembly

Item	Part No.	Description	Qty.	Item	Part No.	Description	Qty.
--	32228	CYLINDER ASSY,3.8M,HOIST III (3.8 m models) (includes items 1 through 6 and 12 through 40)		23	22554	PISTON RETAINER RING,#4.....	1
--	32229	CYLINDER ASSY,5.6M,HOIST III (5.6 m models) (includes items 1 through 6 and 12 through 40)		24	22763	PISTON-LOWER,#5.....	1
--	23159	SEAL KIT COMPLETE-HOIST (includes Felt Dust Wiper Kit)		25	22769	PISTON-UPPER,#5.....	1
--	32240	FELT DUST WIPER KIT		26	22555	PISTON RETAINER RING,#5.....	1
1	22542	M4 X 5 PHILLIPS (CHEESEHEAD) (all models)		27	22764	PISTON-LOWER,#6.....	1
2	22731	M5 X 6 SHCS SS,MACHINED HEAD** (all models)		28	22781	PISTON-UPPER,#6.....	1
3	6607	WASHER,LOCK,#10 PLTD		29	22556	PISTON RETAINER RING,#6.....	1
4	22545	SCREW,SHC,M6 X 30MM,GR8.8,LP**.....	15	30	22566	FELT RETAINER RING,#1.....	1
4A	22544	SCREW,SHC,M6 X 25MM,GR8***...4 (base position only)		31	32231	TUBE ASSY,BASE,3.8M,HOIST III.....	1
5	22546	RETAINER RING,PUSH-ON,.50,6PRG.....	1	31A	32233	TUBE ASSY,BASE,5.6M,HOIST III (5.6 m models)	
6	2049	7/16 / 11.11 MM BALL.....	1	32	22567	FELT RETAINER RING,#2.....	1
7	22584	VALVE,PRES.RELIEF,1/8NPT 87PSI.....	1	33	23145	TUBE ASSY,2ND STAGE,H-II 3.8....1 (3.8 m models)	
8	33284	TEE,INLET.....	1	33A	23150	TUBE ASSY,2ND STAGE,H-II 5.6M (5.6 m models)	
9	2205	QUICK DISCONNECT PLUG/#185.....	1	34	22568	FELT RETAINER RING,#3.....	1
10	22585	ELBOW,130239-2-2.....	1	35	23146	TUBE ASSY,3RD STAGE,H-II 3.8M.....	1
11	32322	NIPPLE,HEX,130137-2.....	1			(3.8 m models)	
12	23155	BASE PISTON ASSY,HOIST II.....	1	35A	23151	TUBE ASSY,3RD STAGE,H-II 5.6M (5.6 m models)	
--	14689	BALL-STEEL BEARING,.25 DIA.		36	22569	FELT RETAINER RING,#4.....	1
--	23041	WASHER,STAR,EXTERNAL,.312		37	23147	TUBE ASSY,4TH STAGE,H-II 3.8M.....	1
--	23178	PROBE ASSY,HOIST II				(3.8 m models)	
13	22765	PISTON-UPPER,BASE.....	1	37A	23152	TUBE ASSY,4TH STAGE,H-II 5.6M (5.6 m models)	
14	22551	PISTON RETAINER RING,#1		38	22570	FELT RETAINER RING,#5.....	1
15	22760	PISTON-LOWER,#2.....	1	39	23148	TUBE ASSY,5TH STAGE,H-II 3.8M.....	1
16	22766	PISTON-UPPER,#2.....	1			(3.8 m models)	
17	22552	PISTON RETAINER RING,#2.....	1	39A	23153	TUBE ASSY,5TH STAGE,H-II 5.6M (5.6 m models)	
18	22761	PISTON-LOWER,#3.....	1	40	22565	TUBE,#6, HOIST II 3.8.....	1
19	22767	PISTON-UPPER,#3.....	1			(3.8 m models)	
20	22553	PISTON RETAINER RING,#3.....	1	40A	22757	TUBE,#6, HOIST II 5.6 (5.6 m models)	
21	22762	PISTON-LOWER,#4.....	1				
22	22768	PISTON-UPPER,#4.....	1				

102.1 Platform Assembly



102.1 Platform Assembly

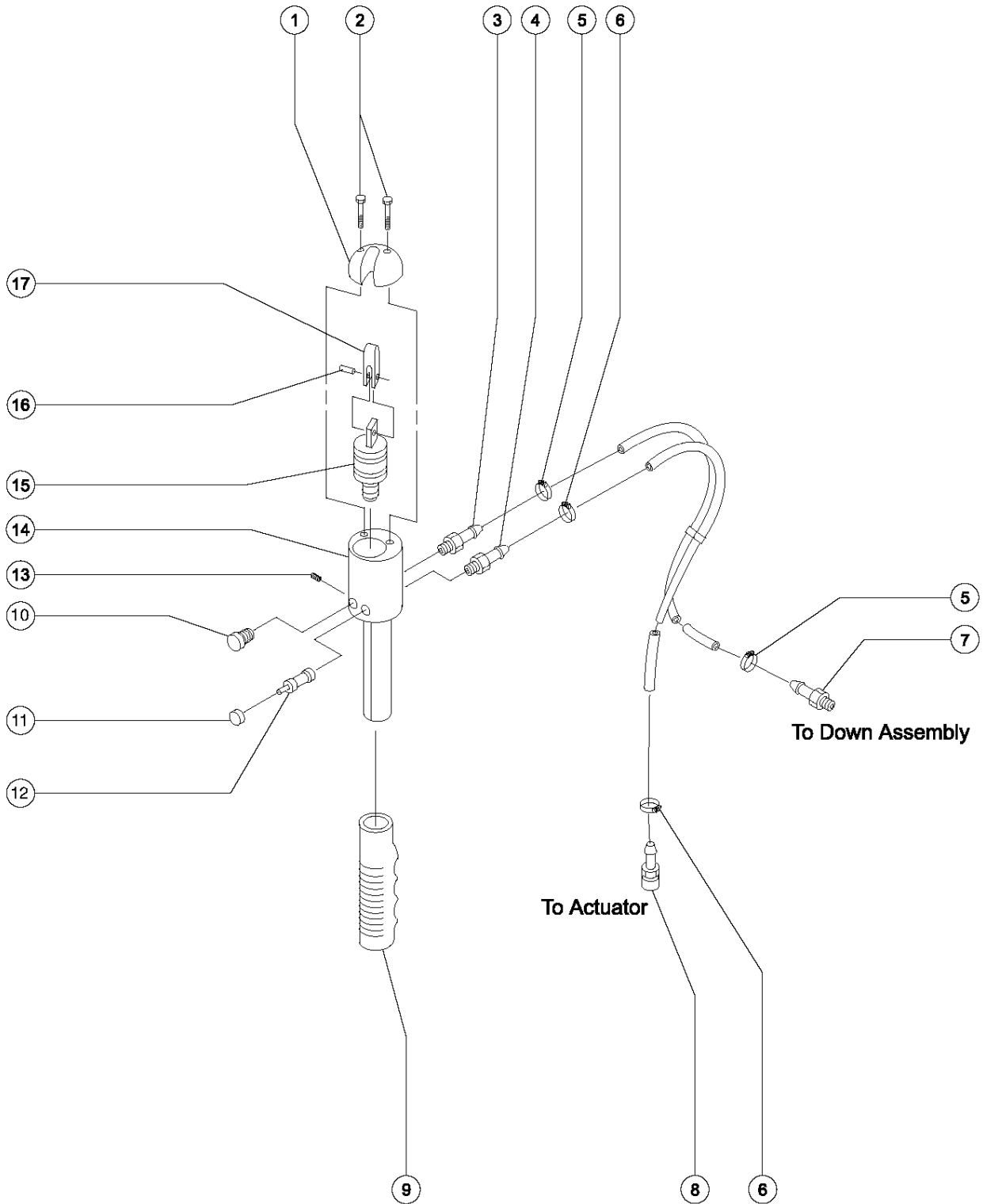
Item	Part No.	Description	Qty.	Item	Part No.	Description	Qty.
--	23051	ACCESSORY,HOIST II PLAT.CRADLE <i>(includes items 1, 2 and 3)</i>		24	19352	RIVET-DRIVE-BARREL HEAD-NYLON.....	4
1	22578	SCREW,HHC,M6 X 20MM,GR8.8....	4	25	57749	CASTER,POST,SW,5X1.25,M12X1.75.4	
2	22577	NUT,T,M6.....	4	26	32235	LEG ASSEMBLY,HOIST III.....	4
3	80598	PIPE CRADLE, GRAY HOIST.....	2			<i>(includes items 21 through 25 and 27 through 29)</i>	
		<i>(to SN GH03-11068)</i>		--	31952-S	LEG,HOIST III	
3A	80592	FORMING, PIPE CRADLE <i>(from SN GH03-11071)</i>		27	6033	WASHER,LOCK,0.5".....	4
4	23170	PLAT. ASSY,HOIST II.....	1	28	23270	NUT,HEX,M12,LP,PLATED.....	4
		<i>(includes items 1, 2 and 5 through 8)</i>		29	29849	BUMPER,RUBBER,1" TALL X 3/8DIA.....	4
--	23171	PLYWOOD,W/NYLON INSERT,HOISTII		30	32309	SCREW,HHC,M8 X 60MM X 1.25....	4
5	23172	PLATFORM MT.KIT,HOIST II.....	1	31	6638	WASHER,FLAT,USS,1/4"Y.....	12
		<i>(includes items 6 and 8)</i>		32	44605	WASHER,FLAT,M8 X .033	
6	6563	WASHER,SHIM,.75 X 1.125 X.030.....	1	33	25368	NUT,NYLOCK,M8X1.25	
7	22574-S	SUPPORT PLATE-HOIST III ,GRAY.....	1	34	35052	STRAP ASSY,CO2 TANK HOLD DOWN.....	2
8	10262	SNAP RING,EXTERNAL,.75 DIA....	1	35	2328	VALVE,PRESSURE RELEASE, 1/4".....	1
9	22557	PLUG-PLATFORM MOUNTING.....	1	36	2327	PLUG,HEX HEAD,1/4 MPT BRASS.....	1
10	22558	SCREW,HHC,M14 X 40MM,GR 8.8.....	1	37	2326	BUSHING,130140-4-2.....	1
11	22588	EYEBOLT,M8 X 30M		38	2322	QUICK DISCONNECT SOCKET W/VALV.....	1
12	22571	NUT,HEX,M8 X 1.25		39	2167	REGULATOR ASSY-METRIC,125 PSI.....	1
13	6724	DECAL,SERIAL# & MODEL# ***.....	1			<i>(includes items 35 through 38, item 40 and items 42 through 45)</i>	
		<i>(to GH03-11322)</i>		39A	2320	REGULATOR ASSY-DOMESTIC HOIST1 <i>(includes items 35 through 38, item 40 and items 42 through 45)</i>	
13A	80939	SERIAL # LABEL,MAT LIFT & SS** <i>(from SN GH03-11323)</i>		39B	2451	DIAPHRAM-PWR REG (POST 1983)	
14	32305	DECAL,SAFETY,HOIST SUPER....	1	40	2325	HAND WRENCH CASTING.....	1
15	52980	DECAL,COSMTC,GENIE SUPER HOIST.....	1	41	2095	SCREW,SET,HS 10-32 X.25	
16	33951	DECAL,CE MARK.....	1	42	2329	NUT,CO2 CONNECTOR,EUROPE/JAPAN....	1
17	23057	SCREW,HHC,M8 X 20MM.....	3	42A	2324	NUT,CO2 CONNECTOR,DOMESTIC	
18	6886	WASHER,LOCK,.313		43	2323	CONN.,INLET STEM,B.**.....	1
19	32238	BASE CASTING,UPPER,HOIST III.....	1	44	2371	O-RING RETAINER RING.....	1
20	32239	BASE CASTING,LOWER,HOIST III.....	1	45	2370	O-RING,.375 X .125.....	1
21	31980	SLIDER,WEAR PAD.....	8	46	2373-S	CO2 TANK W/CARTON,20LB EMPTY.....	1
22	32234	LEG LOCK ASSY,HOIST III.....	4				
		<i>(includes items 21 and 23)</i>					
23	31955	SPRING,SLIDER.....	4				

102.1 Platform Assembly
(continued)

Item	Part No.	Description	Qty.
--	33738	HANDLE GUARD,CO2 TANK-LUXFER	
--	33739	HANDLE GUARD,CO2TANK-CATALINA	
47	28054-S	BRACKET,AIR BOTTLE,PAINTED.....	1
48	6637	SCREW,HHC,1/4-20 X 1.75	
49	8170	NUT,WING,1/4-20	

This Page Intentionally Left Blank

103.1 Control Handle Assembly



103.1 Control Handle Assembly

Item	Part No.	Description	Qty.
--	32237	HOSE/HAND CNTRL ASSY,HOIST III <i>(includes items 1 through 17)</i>	
--	23177	HOSE ASSY,W/FITTINGS,HOIST II <i>(includes items 3 through 8)</i>	
--	32236	CONTROL HANDLE ASSY,HOIST III* <i>(does not include items 7 and 8)</i>	
1	32291	COVER,CONTROL HANDLE.....	1
2	32328	SCREW,SHC,10-32 X .5	
3	23257	HOSE END,MALE.188HS X.125MPT.....	1
4	22737	HOSE END,MALE .25 X .125 MPT.....	1
5A	31982	CLAMP,HOSE,1 EAR, 15/32..... <i>(to SN 53458)</i>	2
5B	226793	CLAMP,HOSE,1 EAR,12.8RER <i>(from SN 53459)</i>	
6	31983	CLAMP,HOSE,1 EAR, 9/16.....	2
7	2346	QUICK DISCON.PLUG 3/16 HS #189.....	1
8	23025	SOCKET,QUICK DISCONN.,MACHINED.....	1
9	6412	HANDLE GRIP (BICYCLE).....	1
10	2336	DOWN BUTTON ASSEMBLY.....	1
11	22594	ACTUATOR BUTTON,2-WAY VALVE.....	1
12	22593	VALVE BODY-2 WAY PNEUMATIC.....	1
13	2095	SCREW,SET,HS 10-32 X.25	
14	32290	CONTROL HANDLE.....	1
15	32241	VALVE,EXHAUST.....	1
16	32242	PIN,ROLL,.094 X .375.....	1
17	32300	LEVER,DUMP VALVE.....	1

Part Number Index

The Part Number Index is a numeric index of all part numbers included in this manual. The index shows what page(s) the part is used on.

Part Number	Page	Part Number	Page
10262	13-14	2327	13-14
14689	11	23270	13-14
19352	13-14	2328	13-14
2049	11	2329	13-14
2095	13-14, 17	2336	17
2167	13-14	2346	17
2205	11	2370	13-14
22542	11	2371	13-14
22544	11	2373-S	13-14
22545	11	2451	13-14
22546	11	25368	13-14
22551	11	28054-S	14
22552	11	29849	13-14
22553	11	31952-S	13-14
22554	11	31955	13-14
22555	11	31980	13-14
22556	11	31982	17
22557	13-14	31983	17
22558	13-14	32228	11
22565	11	32229	11
22566	11	32231	11
22567	11	32233	11
22568	11	32234	13-14
22569	11	32235	13-14
22570	11	32236	17
22571	13-14	32237	17
22574-S	13-14	32238	13-14
22577	13-14	32239	13-14
22578	13-14	32240	11
22584	11	32241	17
22585	11	32242	17
22588	13-14	32290	17
22593	17	32291	17
22594	17	32300	17
226793	17	32305	13-14
22731	11	32309	13-14
22737	17	32322	11
22757	11	32328	17
22760	11	33284	11
22761	11	33738	14
22762	11	33739	14
22763	11	33951	13-14
22764	11	35052	13-14
22765	11	44605	13-14
22766	11	52980	13-14
22767	11	57749	13-14
22768	11	6033	13-14
22769	11	6412	17
22781	11	6563	13-14
23025	17	6607	11
23041	11	6637	14
23051	13-14	6638	13-14
23057	13-14	6724	13-14
23145	11	6886	13-14
23146	11	80592	13-14
23147	11	80598	13-14
23148	11	80939	13-14
23150	11	8170	14
23151	11		
23152	11		
23153	11		
23155	11		
23159	11		
23170	13-14		
23171	13-14		
23172	13-14		
23177	17		
23178	11		
2320	13-14		
2322	13-14		
2323	13-14		
2324	13-14		
2325	13-14		
23257	17		
2326	13-14		

The Part Description Index is an alphabetical index of all part descriptions included in this manual. The index shows what page(s) the part is used on.

- 7**
7/16 / 11.11 MM BALL.....11
- A**
ACCESSORY,HOIST II PLAT.CRADLE.....13-14
ACTUATOR BUTTON,2-WAY VALVE.....17
- B**
BALL-STEEL BEARING,.25 DIA.....11
BASE CASTING,LOWER,HOIST III.....13-14
BASE CASTING,UPPER,HOIST III.....13-14
BASE PISTON ASSY,HOIST II.....11
BRACKET,AIR BOTTLE,PAINTED.....14
BUMPER,RUBBER,1" TALL X 3/8DIA.....13-14
BUSHING,130140-4-2.....13-14
- C**
CASTER,POST,SW,5X1.25,M12X1.75.....13-14
CLAMP,HOSE,1 EAR, 15/32.....17
CLAMP,HOSE,1 EAR, 9/16.....17
CLAMP,HOSE,1 EAR,12.8RER.....17
CO2 TANK W/CARTON,20LB EMPTY.....13-14
CONN.,INLET STEM,B.**.....13-14
CONTROL HANDLE.....17
CONTROL HANDLE ASSY,HOIST III*.....17
COVER,CONTROL HANDLE.....17
CYLINDER ASSY,3.8M,HOIST III.....11
CYLINDER ASSY,5.6M,HOIST III.....11
- D**
DECAL,CE MARK.....13-14
DECAL,COSMTC,GENIE SUPER HOIST...13-14
DECAL,SAFETY,HOIST SUPER.....13-14
DECAL,SERIAL# & MODEL# ***.....13-14
DIAPHRAM-PWR REG (POST 1983).....13-14
DOWN BUTTON ASSEMBLY.....17
- E**
ELBOW,130239-2-2.....11
EYEBOLT,M8 X 30M.....13-14
- F**
FELT DUST WIPER KIT.....11
FELT RETAINER RING,#1.....11
FELT RETAINER RING,#2.....11
FELT RETAINER RING,#3.....11
FELT RETAINER RING,#4.....11
FELT RETAINER RING,#5.....11
FORMING, PIPE CRADLE.....13-14
- H**
HAND WRENCH CASTING.....13-14
HANDLE GRIP (BICYCLE).....17
HANDLE GUARD,CO2 TANK-LUXFER.....14
HANDLE GUARD,CO2TANK-CATALINA.....14
HOSE ASSY,W/FITTINGS,HOIST II.....17
HOSE END,MALE .25 X .125 MPT.....17
HOSE END,MALE.188HS X.125MPT.....17
- HOSE/HAND CNTRL ASSY,HOIST III.....17
- L**
LEG ASSEMBLY,HOIST III.....13-14
LEG LOCK ASSY,HOIST III.....13-14
LEG,HOIST III.....13-14
LEVER,DUMP VALVE.....17
- M**
M4 X 5 PHILLIPS (CHEESEHEAD).....11
M5 X 6 SHCS SS,MACHINED HEAD**.....11
- N**
NIPPLE,HEX,130137-2.....11
NUT,CO2 CONNECTOR,DOMESTIC.....13-14
N U T , C O 2
CONNECTOR,EUROPE/JAPAN.....13-14
NUT,HEX,M12,LP,PLATED.....13-14
NUT,HEX,M8 X 1.25.....13-14
NUT,NYLOCK,M8X1.25.....13-14
NUT,T,M6.....13-14
NUT,WING,1/4-20.....14
- O**
O-RING RETAINER RING.....13-14
O-RING,.375 X .125.....13-14
- P**
PIN,ROLL,.094 X .375.....17
PIPE CRADLE, GRAY HOIST.....13-14
PISTON RETAINER RING,#1.....11
PISTON RETAINER RING,#2.....11
PISTON RETAINER RING,#3.....11
PISTON RETAINER RING,#4.....11
PISTON RETAINER RING,#5.....11
PISTON RETAINER RING,#6.....11
PISTON-LOWER,#2.....11
PISTON-LOWER,#3.....11
PISTON-LOWER,#4.....11
PISTON-LOWER,#5.....11
PISTON-LOWER,#6.....11
PISTON-UPPER,#2.....11
PISTON-UPPER,#3.....11
PISTON-UPPER,#4.....11
PISTON-UPPER,#5.....11
PISTON-UPPER,#6.....11
PISTON-UPPER,BASE.....11
PLAT. ASSY,HOIST II.....13-14
PLATFORM MT.KIT,HOIST II.....13-14
PLUG,HEX HEAD,1/4 MPT BRASS.....13-14
PLUG-PLATFORM MOUNTING.....13-14
PLYWOOD,W/NYLON INSERT,HOISTII.....13-14
PROBE ASSY,HOIST II.....11
- Q**
QUICK DISCON.PLUG 3/16 HS #189.....17
QUICK DISCONNECT PLUG#185.....11
QUICK DISCONNECT SOCKET W/VALV...13-14
- R**
REGULATOR ASSY-DOMESTIC
HOIST1.....13-14
REGULATOR ASSY-METRIC,125 PSI.....13-14
RETAINER RING,PUSH-ON,.50,6PRG.....11
RIVET-DRIVE-BARREL HEAD-NYLON.....13-14
- S**
SCREW,HHC,1/4-20 X 1.75.....14
SCREW,HHC,M14 X 40MM,GR 8.8.....13-14
SCREW,HHC,M6 X 20MM,GR8.8.....13-14
SCREW,HHC,M8 X 20MM.....13-14
SCREW,HHC,M8 X 60MM X 1.25.....13-14
SCREW,SET,HS 10-32 X.25.....13-14, 17
SCREW,SHC,10-32 X .5.....17
SCREW,SHC,M6 X 25MM,GR8***.....11
SCREW,SHC,M6 X 30MM,GR8.8,LP**.....11
SEAL KIT COMPLETE-HOIST.....11
SERIAL # LABEL,MAT LIFT & SS**.....13-14
SLIDER,WEAR PAD.....13-14
SNAP RING,EXTERNAL,.75 DIA.....13-14
SOCKET,QUICK DISCONN.,MACHINED.....17
SPRING,SLIDER.....13-14
STRAP ASSY,CO2 TANK HOLD DOWN.....13-14
SUPPORT PLATE-HOIST III ,GRAY.....13-14
- T**
TEE,INLET.....11
TUBE ASSY,2ND STAGE,H-II 3.8.....11
TUBE ASSY,2ND STAGE,H-II 5.6M.....11
TUBE ASSY,3RD STAGE,H-II 3.8M.....11
TUBE ASSY,3RD STAGE,H-II 5.6M.....11
TUBE ASSY,4TH STAGE,H-II 3.8M.....11
TUBE ASSY,4TH STAGE,H-II 5.6M.....11
TUBE ASSY,5TH STAGE,H-II 3.8M.....11
TUBE ASSY,5TH STAGE,H-II 5.6M.....11
TUBE ASSY,BASE,3.8M,HOIST III.....11
TUBE ASSY,BASE,5.6M,HOIST III.....11
TUBE,#6, HOIST II 3.8.....11
TUBE,#6, HOIST II 5.6.....11
- V**
VALVE BODY-2 WAY PNEUMATIC.....17
VALVE,EXHAUST.....17
VALVE,PRES.RELIEF,1/8NPT 87PSI.....11
VALVE,PRESSURE RELEASE, 1/4".....13-14
- W**
WASHER,FLAT,M8 X .033.....13-14
WASHER,FLAT,USS,1/4"Y.....13-14
WASHER,LOCK,#10 PLTD.....11
WASHER,LOCK,.313.....13-14
WASHER,LOCK,0.5".....13-14
WASHER,SHIM,.75 X 1.125 X.030.....13-14
WASHER,STAR,EXTERNAL,.312.....11

This Page Intentionally Left Blank

California Proposition 65

Warning

The exhaust from this product contains chemicals known to the State of California to cause cancer, birth defects or other reproductive harm.

Genie North America

Phone 425.881.1800
Toll Free USA and Canada
800.536.1800
Fax 425.883.3475

Genie Australia Pty Ltd.

Phone +61 7 3375 1660
Fax +61 7 3375 1002

Genie China

Phone +86 21 53852570
Fax +86 21 53852569

Genie Malaysia

Phone +65 98 480 775
Fax +65 67 533 544

Genie Japan

Phone +81 3 3453 6082
Fax +81 3 3453 6083

Genie Korea

Phone +82 25 587 267
Fax +82 25 583 910

Genie Brasil

Phone +55 11 41 665 755
Fax +55 11 41 665 754

Genie Holland

Phone +31 183 581 102
Fax +31 183 581 566

Genie Scandinavia

Phone +46 31 575100
Fax +46 31 579020

Genie France

Phone +33 (0)2 37 26 09 99
Fax +33 (0)2 37 26 09 98

Genie Iberica

Phone +34 93 579 5042
Fax +34 93 579 5059

Genie Germany

Phone +49 (0)4202 88520
Fax +49 (0)4202 8852-20

Genie U.K.

Phone +44 (0)1476 584333
Fax +44 (0)1476 584334

Genie Mexico City

Phone +52 55 5666 5242
Fax +52 55 5666 3241

Distributed By:

Parts Manual
Super Hoist

from 4193-93 to 4101-8906
from GH02-8907

Part No.
82298

Rev D4

